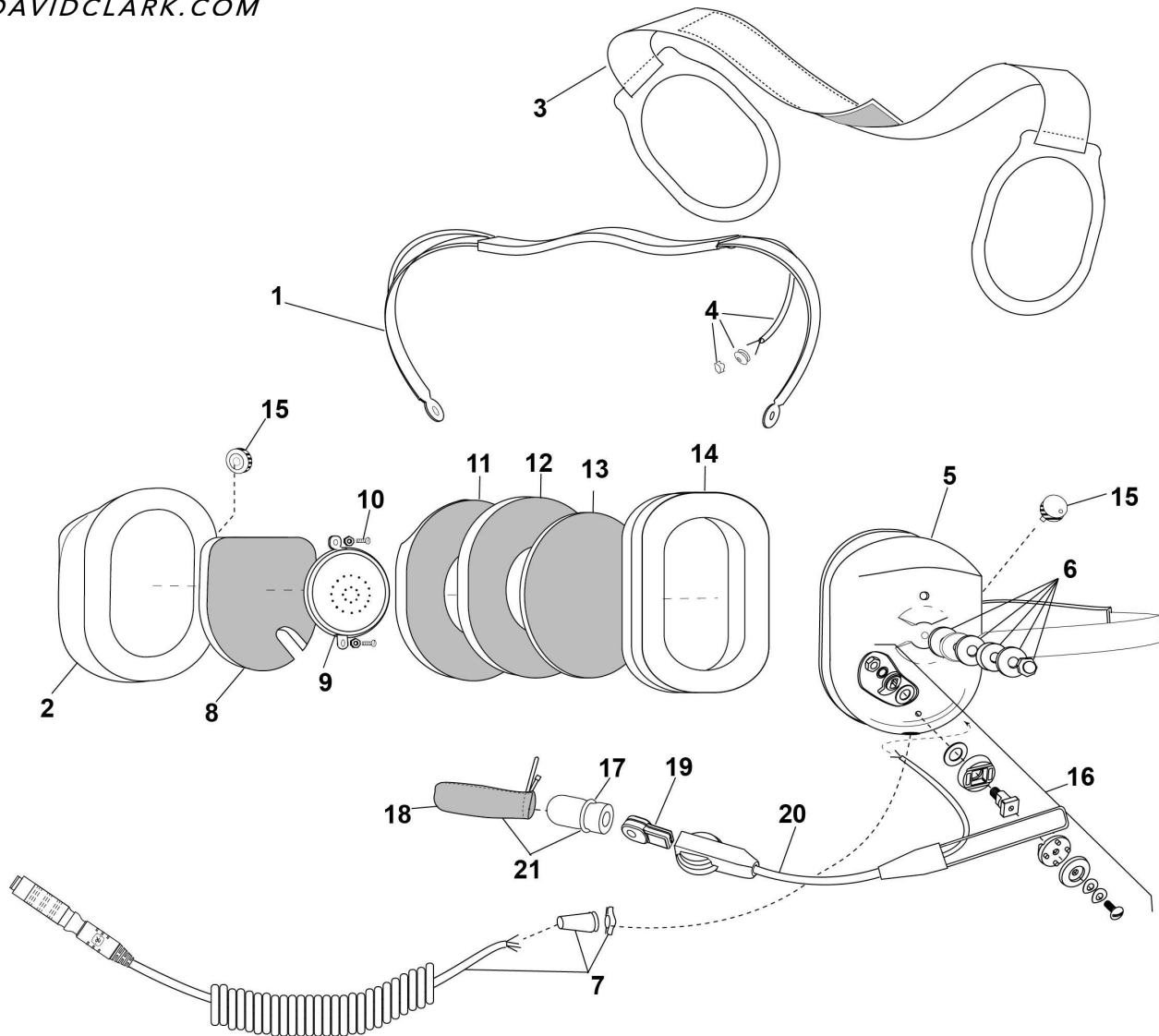


**PARTS LIST
MODEL H9140**


No.	Description	Part No.
1	Spring Assembly	40623G-75
2	Dome, Right	15522P-41
3	Support Assembly	10370G-03
4	Overhead Cord Assembly	22607G-01
5	Dome, Left (mic side)	15522P-49
6	Nut & Washer Kit (10/pk)	12052G-03
7	Comm Cord Assy Kit	41080G-30
8	Dome Filter (1 each)	11410P-02
9	Earphone Assembly	10376G-55
10	Screw (10/pk)	00023M-08
11	Dome Filter (1 each)	25629P-05

No.	Description	Part No.
12	Dome Filter (1 each)	14096P-05
13	Filter (1 each)	14096P-09
14	Undercut Gel Earseal (pair)	40863G-02
15	Volume Control	09349P-57
16	Boom Guide Kit	12840G-20
17	Screen, Wind, Mic	40062G-06
18	Windscreen Cover w/Tie	18792G-04
19	Microphone M-2H (150 OHMS)	09168P-76
20	Hybrid Boom w/PTT	18740G-40
21	Mic Protector/Windscreen Kit	41090G-23

ELECTRICAL SCHEMATIC MODEL H9140

